

C.Scope

For locating and tracing underground services

The Cable Avoidance Tool (CAT) is a full function, industry standard locator which every ground working operative will find familiar and easy to use. It is rugged, lightweight and full of features.

- LCD meter - precision locating as standard
- Detachable loudspeaker - held next to the ear in noisy work situations
- Fingertip controls - adjust sensitivity and rapid switching between the locator's three operating modes
- Two models available:
 - **Standard model**
 - **XD model** with depth indication

Advantages:

- Visual Display provides greater precision and offers improved operation for accurate direction and splitting close signals
- Spare battery pack included
- Constant battery level indicator
- Customer replaceable speaker assembly



LCD meter displays signal strength, mode, depth and battery condition

Fingertip controls for selection of search mode



Detachable speaker for improved listening in



Replaceable wear plate



The XD Cable Avoidance Tool has all the familiar user-friendly features of the standard model, but more power, more precision and more information from underground

SPECIFICATION

CSCAT-33

Cable Avoidance Tool

Controls

On/Off control, activated when in use
Three position function switch:

P - POWER mode for live, imbalanced cables

R - RADIO mode for re-radiated radio signals

G - GENERATOR mode for detecting conductors carrying the Generator signal

Detachable (user replaceable) loudspeaker
User replaceable base protector

Display

Signal strength, battery condition, operating mode

Depth of detection

Detects to the following depths:
P-3 metres R-2 metres G-3 metres

These values are provided for information only and performance depends on the site (terrain, temperature, humidity, etc).

Batteries (not included)

Type: 8 x AA (IEC type LR6)
Life: 40 hours (at 20°C)

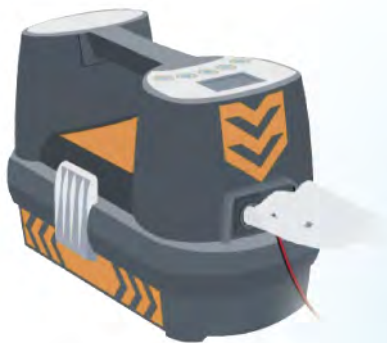
Check: an audio signal indicates that the batteries have sufficient power when the receiver is first turned on. During use, a battery check facility is displayed.

Weight: 3kg (including batteries)

Moisture/Dust resistant: IP65

ZCSSGSGA-33 Signal Generator

Enhance detect-ability of pipes and cables. Use to transmit an easily identifiable signal along a pipe or cable. The Cable Avoidance Tool uses industry accepted 33kHz frequency for clear reception.



CSCATXD-33

Cable Avoidance Tool + Depth Indication



Includes features of the standard CAT with additional depth option

- Depth push button: in G mode only gives a depth indication
- Battery check

Depth measurement

Active in G Mode only

Range:
0.25 –3.0m (Line)
1.0 – 6.0m (Sonde)

Visual indicator

Large, high accuracy, LCD with ruggedised mounting. Mounted behind a polycarbonate lens for maximum protection.

Controls

On/Off – Signal level rotary control
Pulse/continuous selection switch
Volume switch

Typical tracing range

Induced mode: 200 metres
Direct connected mode: 350 metres

Frequency: 33kHz pulsed/continuous

Batteries (not included)

Type: 4 x D cells (IEC type LR20)
Life: 30 hours intermittent use at 20°C

Advantages

- Variable power
- Pulsed or continuous signal output
- C/w earth spool and magnets as standard